

# Join with other child care workers by becoming a BCGEU Special Associate Member!



**A**RE YOU A CHILD CARE WORKER concerned about long waiting lists and the urgent need for more affordable, accessible child care for working families?

You're not alone.

Child care workers across the province just like you are advocating for a better child care system.

As a child care worker, you understand the importance of early childhood education in a child's development. You see first-hand how children and families benefit from dependable, quality child care. And you know how desperate families are for quality child care they can afford.

So do we.

As the representative of more child care workers than any other union in B.C., we are working with our members, employers, parents, and child care advocates to improve working conditions for workers and accessibility for families.

**It's going to take all of us—working together—to achieve a universal child care program that meets the needs of families, workers and communities.**

**You can help by becoming a Special Associate Member of the BCGEU.**

**There's no fee. You won't have to pay dues like union members, and you'll have access to a wide range of resources offered by the BCGEU.**

**Most importantly, you'll be joining with other child care workers in a province-wide campaign to put children and families first!**

## Special Member Benefits include:

**BCGEU MASTERCARD** - preferred credit card offer.

**WE TRAVEL LTD.** - for all your professional and family travel needs. WE Travel offers a 5% discount on selected holiday packages.

### **WE INSURANCE SERVICES LTD.** -

- Home and Auto Insurance
- Life Insurance
- Group Benefits & Consultants
- Commercial Insurance

**WE TAX SERVICES** - union-owned, specializing in personal tax returns and financial planning for working people.

**PARK'N FLY** - the BCGEU CorpRate identification number provides special members with big savings (currently a 25% discount) at Park'n Fly locations in Vancouver, Toronto, Ottawa, Windsor, Montreal, Edmonton and Calgary. Receive Aeroplan miles with each stay. Air Canada check-in exclusively at Toronto and Vancouver locations.

**DUECK ON MARINE** - Offers an incentive program for BCGEU special members and their immediate families towards the purchase or lease of a new vehicle, at 4% over dealer cost, and all factory incentives (400 SE Marine Drive, Vancouver)

**VANCITY** - if you are already a VanCity member, or want to join, anywhere in B.C.:

- ✓ first month's fees on a chequing account package waived;
- ✓ \$40 credit when you transfer your direct payroll deposit to VanCity;
- ✓ 90 day deferred first payment on loans of \$5000 or more;
- ✓ 1% off posted rate on fixed term mortgages of 3 years or longer;
- ✓ Reimbursement of mortgage transfer-out fee, up to \$200;
- ✓ .25% bonus on all Term Deposits for 1- 5 year terms;
- ✓ Savings of up to 50% on SafeRate home insurance ...and much more.

# Special Associate Member

# Become a BCGEU Special Associate Member!

**YES! I want to be a BCGEU Special Associate Member**

I understand this is an absolutely free membership.

Name: \_\_\_\_\_

Phone: \_\_\_\_\_

Address: \_\_\_\_\_

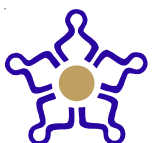
\_\_\_\_\_ Postal Code

Email: \_\_\_\_\_

*Get connected with a larger community!*

And, as a BCGEU special associate member,  
you receive information, education, support,  
networking resources and other benefits, at no cost!

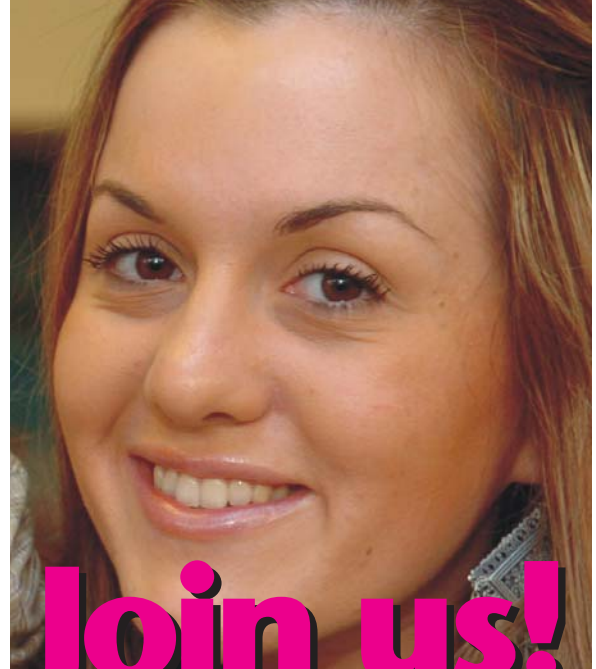
- **free workshops** on workers' rights, health and safety, career development, lobbying strategies, or related issues. Some of these educationals may be used towards professional ECE certification requirements;
- **membership reward** benefits (e.g. union credit card, insurance programs, special purchase offers);
- **information and connections** with campaigns on child care and related issues;
- **monthly mailings** of our news magazine, *The Provincial*;
- **invitations** to participate in BCGEU-sponsored membership events (e.g. Labour Day events, family carnivals, open membership educational sessions);
- **meetings** of special associate members (may be on a regional, area, community, sectoral or other basis).



Please return your application form to:

**B.C. Government and Service Employees' Union**

4911 Canada Way, Burnaby, B.C. V5G 3W3 Toll-free 1-800-663-1674



# Join us!



[www.bcg eu.ca](http://www.bcg eu.ca)