

Join with other child care workers by becoming a BCGEU Special Associate Member!



ARE YOU A CHILD CARE WORKER concerned about long waiting lists and an urgent need for more affordable, accessible and not-for-profit child care for working families?

You're not alone.

Child care workers across the province just like you are advocating for a better child care system in British Columbia.

As a child care worker, you understand the importance of early childhood education in a child's development. You see first-hand how children and families benefit from dependable, quality child care. And you know how desperate families are for quality child care they can afford.

So do we.

As the representative of more child care workers than any other union in B.C., we are working with our members, employers, parents, and child care advocates to improve working conditions for workers and accessibility for families.

It's going to take all of us—working together—to achieve a universal child care program that meets the needs of families, workers and communities.

You can help by becoming a Special Associate Member of the BCGEU.

There's no fee. You won't have to pay dues like union members, but you'll have access to a wide range of resources offered by the BCGEU.

And most importantly, you'll be joining with other child care workers in a province-wide campaign to put kids and families first!

Special Member Benefit Programs include:

VANCITY - wherever you are in B.C.

- ✓ first month's fees on a chequing account package waived;
- ✓ \$40 credit when you transfer your direct payroll deposit to VanCity;
- ✓ 90 day deferred first payment on loans of \$5000 or more;
- ✓ 1% off posted rate on fixed term mortgages of 3 years or longer;
- ✓ Reimbursement of mortgage transfer-out fee, up to \$200;
- ✓ .25% bonus on all Term Deposits for 1- 5 year terms;
- ✓ Savings of up to 50% on SafeRate home insurance ...and much more.

PARK'N FLY - the BCGEU CorpRate identification number provides special members with big savings (currently 25% discount) at Park'n Fly locations in Vancouver, Toronto, Ottawa, Windsor, Montreal, Edmonton and Calgary. Receive Aeroplan miles with each stay. Air Canada check-in exclusively at Toronto and Vancouver locations.

WE TRAVEL LTD. - for all your professional and family travel needs. WE Travel offers a 5% discount on selected holiday packages.

WE INSURANCE SERVICES LTD. -

- Home and Auto Insurance
- Life Insurance
- Group Benefits & Consultants
- Commercial Insurance

WE Tax Services - union-owned, specializing in personal tax returns and financial planning for working people.

DUECK ON MARINE - Offers an incentive program for BCGEU special members and their immediate families towards the purchase or lease of a new vehicle, at 4% over dealer cost, and all factory incentives (400 SE Marine Drive, Vancouver)

BCGEU MASTERCARD - preferred credit card offer.

Special Associate Member

Become a BCGEU Special Associate Member!



Please check the boxes below and fill in your name and contact information

YES! I want to be a BCGEU Special Associate Member

YES! I want to help in the child care campaign

Name: _____

Phone: _____

Address: _____

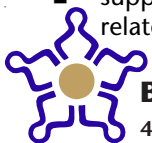
_____ Postal Code

Email: _____

A BCGEU SPECIAL ASSOCIATE MEMBERSHIP is available to any worker interested in getting more information and education about your rights as an employee, as well as support to improve your working conditions and stabilize government funding for the sector in which you work.

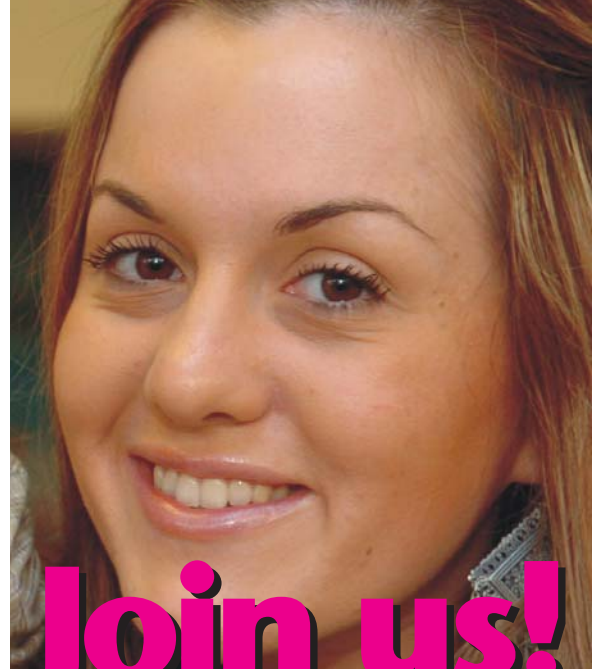
Special Associate Members are entitled to:

- "membership reward" benefits (e.g. union credit card, insurance programs, special purchase offers);
- our newsmagazine, *The Provincial*;
- other general membership mailings and outreach as appropriate;
- access to a dedicated "Special Associate Members" website;
- invitations to participate in cross component committee-sponsored membership events (e.g. Labour Day events, family carnivals, open membership educational sessions);
- special associate membership meetings (may be on a regional, area, community, sectoral or other basis as required);
- periodic educationals or other sessions related to employment rights, health and safety, career development, lobbying strategies, or other identified sectoral issues;
- support for community or provincial campaigns on child care and related issues.



B.C. Government and Service Employees' Union

4911 Canada Way, Burnaby, B.C. V5G 3W3 Toll-free 1-800-663-1674



Join us!



www.bcg eu.ca